

ATTACHMENT B

ATTACHMENT B

EXHIBITION PANELS

Introduction

About the Project

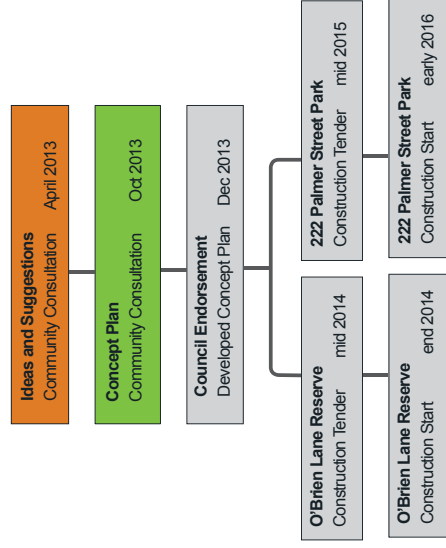
The City of Sydney is committed to ensuring our residents have access to excellent local parks. This project will renew O'Brien Lane Reserve and also create a new park at 222 Palmer Street, East Sydney.

O'Brien Lane Reserve provides the local community with much needed open space and will be revitalised to become a high quality small park.

222 Palmer Street is currently the site of a childcare centre and will be transformed into a new small park for the community. A new childcare facility will be built nearby at 277 Bourke Street.

In April this year, we invited you to speak with us at a community meeting and share your views on how the park could be improved. Your feedback has helped us shape the concept plan.

Project Timeline



Albert Sloss Reserve



Riley Street Closure

Have your say

The proposed design will be on exhibition until **2nd November 2013** and we would like your comments.

Contact

Keelie Community Engagement Coordinator, on phone 9265 9787 or email kli@cityofsydney.nsw.gov.au

Postal Address

City of Sydney, GPO Box 1591, Sydney NSW 2001

Website

You can also provide feedback to Council on information displayed on the website until **2nd November 2013**.

www.sydneyyoursay.com.au

General Enquiries

Tel: 02 9265 9333 (24 hours, 7 days per week)
 Fax: 02 9265 9222
council@cityofsydney.nsw.gov.au
www.cityofsydney.nsw.gov.au



Your neighbourhood parks

- 1. Albert Sloss Reserve**
A small park with playground facilities catering for 0-7 year old children and a small open grassed area. This park is being upgraded at the end of 2015.
- 2. Farrell Ave Open Space**
Grass area and formal planting with some mature trees.
- 3. Green Park**
Park with bendisland cafe and grassed areas.
- 4. Daffodil Park**
A park with grassed area under shade trees.

- 5. Cook & Phillip Park**
Significant open space with public aquatic and fitness centre. Small playground, open grassed areas and water features.
- 6. Bourke Street Park & Wulla Mulla Reserve**
Park with exercise equipment, community garden & toilet facilities.
- 7. Hyde Park**
Highly significant public space with heritage monuments, significant formal planting and high capacity access and circulation. Multiple seating, gathering and open grass areas.

- 8. Harmony Park**
Mainly a grassed area with informal trees. Formal seating and gathering areas at park entries.
- 9. James Hilder Reserve**
Park with play facilities catering for 0-7 year old children. Mostly open grassed area under shade trees with multiple seating opportunities.

Public spaces & laneways & road closures

- No formal recreation facilities, planting and pedestrian access only.
- 10. The Republic**
- 11. Kings Lane Closure**
- 12. Thomson Street Closure**
- 13. Riley Street Closure**
- 14. Liverpool Lane Closure**



What you told us

Here are some ideas previously raised by the community about these green spaces:

O'Brien Lane Reserve

Suggestions/Vision:

- Provide an off-leash dog exercise area.
- Maximise useable space.
- Address anti-social behaviour issues in the park and provide safety fencing.
- Create a 'natural' park landscape rather than a highly structured one.
- Provide a social setting for informal and formal games such as outdoor chess and petanque.
- Include environmental sustainable design perhaps in the form of rainwater gardens.
- Provide shade from trees and park structures such as a pergola.
- Reduce impacts of large trees to increase areas of sun in the park.
- Provide play facilities such as nature play, and ensure children are safe from the busy street.

Issues/Concerns:

- Need to discourage anti-social behaviour in the park.
- Address mosquito problem.

222 Palmer Street

Suggestions/Vision:

- Include a community garden which could be used as a teaching space for children.
- Robust native plants for shade.
- Include formal seating and pergola.

Issues/Concerns:

- Need to discourage anti-social behaviour in the new park.
- Ensure security and privacy is maintained to adjoining properties.

O'Briens Lane, Palmer Lane & Berwick Lane

- Improve lighting in laneways.



O'Brien Lane Reserve



Palmer Lane



222 Palmer Street

Existing Site Plan



Project Aims

The renewal of O'Brien Lane Reserve aims to provide the local community with a high quality open space which maximises useable green space and discourages anti-social behaviour.

The key project aims are:

- Maximise useable grass space, retain existing 'natural' park character and introduce new trees and planting.
- Improve pedestrian access through the park and in the adjacent laneway.
- Provide well defined spaces for social recreation activities to increase park visitation and a sense of public ownership.
- Discourage anti-social behaviour.
- Improve solar access into the park.
- Improve lighting in park and adjacent laneways.

Concept Plan



Tree Management Strategy

The existing trees have been assessed with the City Arborist. The significant trees have been retained and incorporated into the concept plan.

Trees to be removed:

- T3 - Brazelet honey myrtle (Melaleuca) - Tree in poor health
- T4 - Willow Bottlebrush - Crown is suppressed due to overshadowing
- T5 - Norfolk Island Pine - Crown is suppressed, blocks sight lines into park
- T7 - London Plane - Tree has a prominent lean and crown is suppressed
- T10 & T11 - Yesterday-today-tomorrow (Brumfelsia) - Small trees 2m in height, blocking sight lines
- T12 - River Oak (Casuarina) - Tree has a prominent lean and its crown is suppressed
- T14 - River Oak (Casuarina) - Crown is suppressed

Trees to be relocated:

- T6 - Bullbay Magnolia

Trees to be retained:

- 5 trees

Additional proposed trees:

- 4 trees

Legend

1. Lush boundary edge planting
2. Accessible recycled brick path
3. Nature play elements in grass and planting, 0-7 year age appropriate
4. Grass bank overlooking path
5. Low retaining wall with seating
6. Open grass area for passive recreation and dog exercise
7. Gravel area with seating for petanque and as audible warning
8. New wall and drainage along building line
9. Stamped surface treatment within laneway to be extended
10. Paved access to O'Briens Lane and new recycled brick stairs
11. Re-located Magnolia tree
12. New wall to retain planting and levels around existing trees
13. New tree planting of clear stem Eucalypts



Section 1 - Looking North



Adjacent residence

Recycled brick path with low seating wall and new Eucalypt tree planting behind

Open, turfed recreation area alongside path. Low planting on banks down to Stanley Street. Existing group of Casuarina trees thinned to improve solar access to turfed area

Bourke Street cycle path

Adjacent footpath

Bourke Street footpath, SCEGGS Darlinghurst Entry/Exit

Section 2 - Looking East



Stanley Street footpath

Sloped turf area overlooking path

Open grass area for passive recreation and dog exercise, with planted bank behind and two large trees

Low planting on banks adjacent to Stanley Street. New clear stem Eucalypt tree planting to retain some solar access

Nature play elements of recycled sandstone blocks and play equipment set amongst planting

New recycled brick steps up to Bourke Street. Extends park levels and character into existing laneway area

Project Aims

The creation of a new park at 222 Palmer Street will provide the local community with much needed open space. The design aims to interpret the historical use of the site as a childcare facility and playground.

The key projects aims are:

- Maximise useable grass space.
- Retain existing tree and provide additional lush shade tolerant planting.
- Provide well defined spaces for social recreation activities to increase park visitation and a sense of public ownership.
- Provide accessible entries into the park.
- Ensure privacy is maintained to adjacent residential properties.
- Provide appropriate lighting in the park and improve lighting in the adjacent laneways.

Section 1 - Looking North



Tree Management Strategy

The existing trees have been assessed with the City Arborist. The significant trees have been retained and incorporated into the concept plan.

Small Trees to be removed:

T22 - T24 - Prickly Paperbark (Melaleuca) - Small trees 3-4m in height, blocks sight lines into park

Trees to be retained:

T20 - Lemon-scented Gum

Additional proposed trees:

3 proposed trees

Low wall elements from the existing building retained

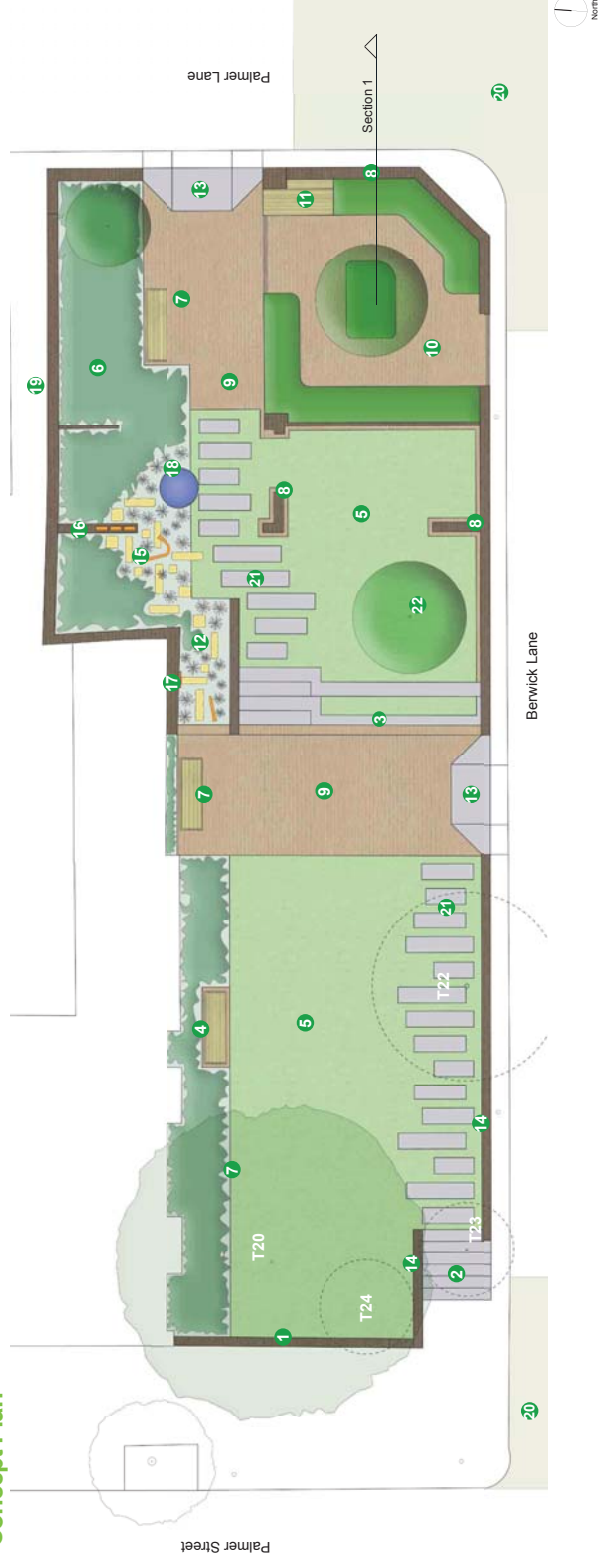
Legend

1. Existing brick retaining wall
2. New concrete steps into park
3. Terrace seating steps with grass infill
4. New ornamental planting along the building line
5. Open grass areas for passive recreation
6. Lush, shade tolerant planting screens rear wall
7. New seats
8. Low remnant brick walls
9. Recycled brick paths
10. Potential community garden space with raised planters, gated entries and new fruit tree
11. Bench storage in community garden space
12. Informal play elements, reclaimed sandstone blocks amongst low planting
13. Accessible park entries, concrete pram ramps
14. New brick retaining walls, max. 900mm high
15. Speaking tubes set amongst planting
16. Vertical games such as tic tac toe
17. Distorting mirrors set against wall
18. Low climbing mound
19. Rear brick wall retained and lowered
20. Stamped surface treatment
21. Concrete stepping stones set in grass
22. New deciduous tree planting in grass

Key

- Existing tree to be retained
- Existing tree to be removed
- Proposed new tree
- Low wall remnant retained from existing building

Concept Plan



Playgrounds



Natural play elements amongst planting



Clayley Reserve, Paddington



Sydney Park Playground

Murals



Sydney street advertising on building facade, C.1901 Source: COS, ArchiverPK



Os Gemess mural, The Netherlands



JR mural, New York

Recreation Facilities



Gravel areas as flexible recreation space for informal games, Petanque etc.



Installation of formal games elements e.g. ping pong

Park Character and Elements



Play elements incorporated into building facade,

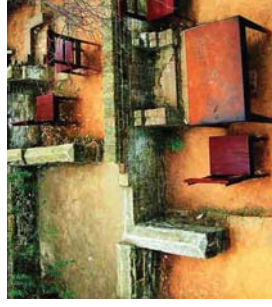


Seating placed in amongst planting along pedestrian axes



Interpretation of heritage elements

Building Elements Retained



Foundation Park, The Rocks



Paddington Reservoir



Foundation Park, The Rocks

Community Gardens



Waverley Environmental Park, Permaculture Interpretive Garden



Off-the-shelf raised planting beds



Rose Terrace Communal Garden, Paddington